

Get Your FATS Right

CAPTEX® MCTs

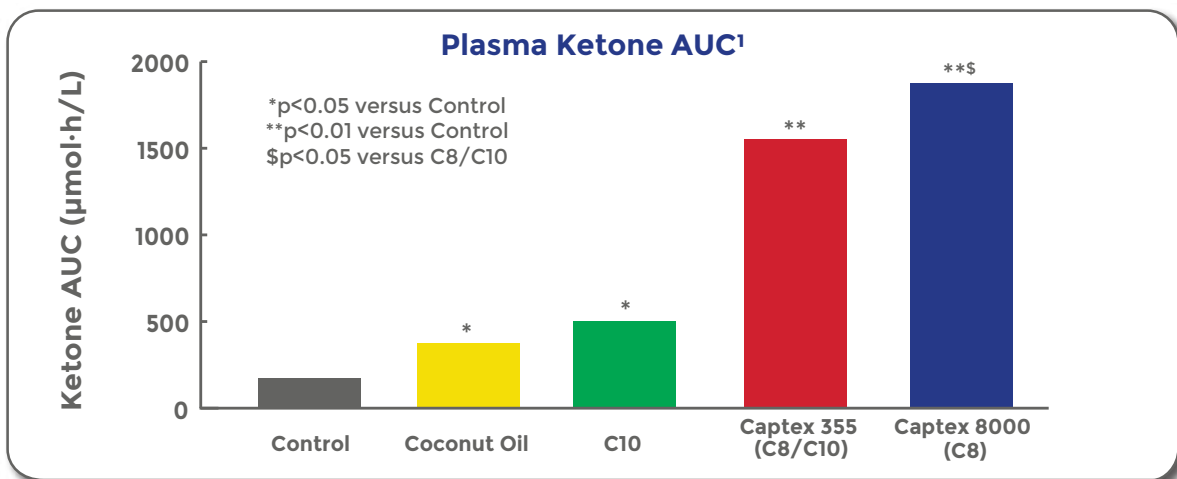
For Health, Endurance & Happiness

Super
Charged
with C8



Get Your Mind, Body & Health moving in the right direction with **Science-backed C8 MCTs**

- ✓ Enhance your **Cognitive Health** formulations with increased ketone production
- ✓ Support your **Ketogenic** consumers with increased satiety & healthy fat intake
- ✓ Increase your **Sports Nutrition** enthusiast's performance with increased energy, thermogenesis & endurance



ABITEC CORPORATION
501 W. First Ave.
Columbus, OH 43215
www.abiteccorp.com

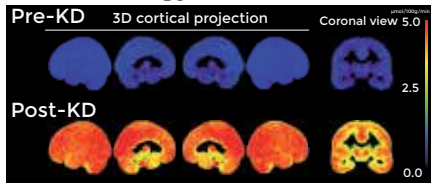




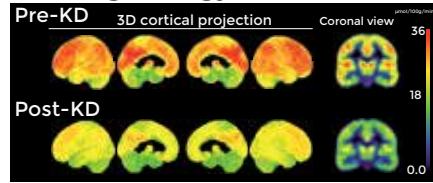
Brain Health

- MCTs support cognitive health
- MCT supplementation increases ketone metabolism in the brain
 - More ketones in the brain², more brain fuel

CMRa (Energy from Acetoacetate)



CMRg (Energy from Glucose)



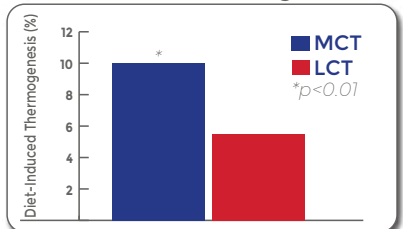
Images of brain energy metabolism during ketogenic diet (KD) including MCT supplementation in healthy adults²



Weight Management

- MCTs increase calorie burn during exercise³
- MCTs have been shown to enhance metabolism
 - With exercise, MCTs increase fat metabolism⁴
- A diet supplemented with MCTs may increase satiety and reduce feelings of hunger⁵

Diet-Induced Thermogenesis



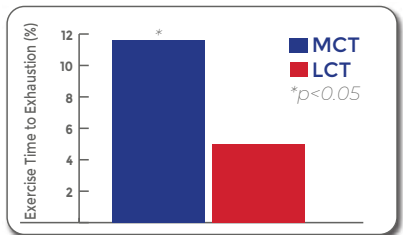
MCT: Medium-chain triglyceride, LCT: Long-chain triglyceride



Sports Nutrition

- MCTs absorb & digest rapidly for quick energy
- MCTs significantly improve endurance performance⁶
- MCTs fuel exercise performance in ketogenic/ fat-adapted athletes

Exercise Time to Exhaustion



The Products

ABITEC PRODUCT	Chemical Name(s)	Caprylic (C8) fatty acid content (%)	Appearance/Form (25° C)	Raw Material Origin
CAPTEX® 300	Caprylic/capric triglyceride	~ 70% C8	Clear Liquid	Palm, Palm Kernel & RSPO
CAPTEX 300 C	Caprylic/capric triglyceride	~ 70% C8	Clear Liquid	Coconut
CAPTEX 300 NP	Caprylic/capric triglyceride	~ 70% C8	Clear Liquid	Non-Palm
CAPTEX 355	Caprylic/capric triglyceride	~ 55	Clear Liquid	Palm, Palm Kernel & RSPO
CAPTEX 355 C	Caprylic/capric triglyceride	~ 55	Clear Liquid	Coconut
CAPTEX 355 NP	Caprylic/capric triglyceride	~ 55	Clear Liquid	Non-Palm
CAPTEX 8000	Glyceryl tricaprylate: Ticaprylin	98	Clear Liquid	Palm Kernel & RSPO
NUTRI SPERSE® MCT 70	Caprylic/capric triglyceride on Non-Fat Dry Milk	70% MCT from Captex 300	Powder	Palm, Palm Kernel, Coconut, & Non-Palm options
NUTRI SPERSE MCT C8	Glyceryl tricaprylate: Ticaprylin on Non-Fat Dry Milk	70% MCT from Captex 8000	Powder	Palm, Palm Kernel, Coconut, & Non-Palm options

1. Vandenberghe, C., et al. *Curr Dev Nutr.* 2017. 1(4): 1-5.
 2. Courchesne-Loyer et al. *J Cerebral Blood Flow & Meta.* 2016.1-9
 3. Kasai, et al. *J Nutr Sci Vitaminol.* 2002.48:536-540

4. Rego Costa, et al. *Nutr Hosp.* 2012.27:103-108
 5. Krotkiewski M. *Int J Obesity.* 2001.25:1393-1400
 6. Nosaka et al. *J Nutr Sci Vitaminol.* 2009.55:120-125

CAPTEX® and NUTRI SPERSE® are registered trademarks of ABITEC Corporation. All information and statements given in this brochure are believed to be accurate at the time of publication. However, neither ABITEC any of their affiliates make any representations or warranty with respect thereto, including, but not limit to, any results obtained in the processing of the products by customers or any third party. All information and statements are intended for persons having the required skill and know-how and do not relieve the customer or user from verifying the suitability of information and statements given for a specific purpose prior to use of products. It is entirely the obligation of the customer or user to comply with applicable laws and regulations, and also with all patent or other intellectual property rights of third parties.